

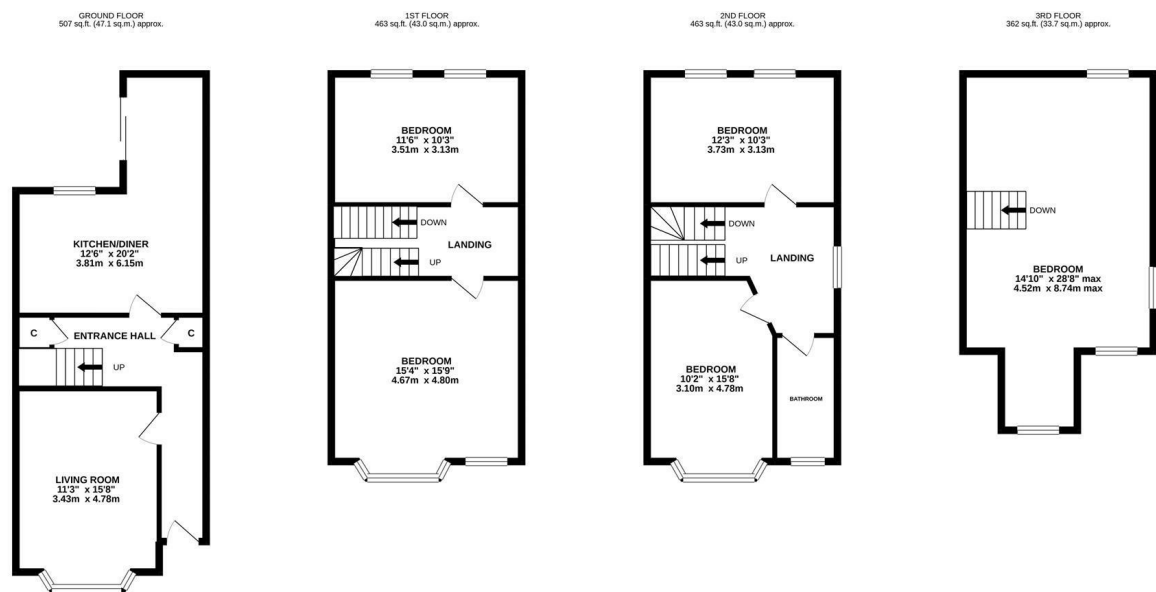


## Milward Crescent, Hastings TN34 3RU

Offers in excess of £475,000



This impressive five bedroom DETACHED HOUSE is ideally positioned just a short stroll from HASTINGS TOWN CENTRE with its mainline railway station, the West Hill, Old Town and the beach. SPANNING FOUR STOREYS the accommodation here enjoys GRAND PROPORTIONS with a versatile layout and a WEALTH OF ORIGINAL FEATURES. The ground floor is arranged as a BAY FRONTED LIVING SPACE which enjoys a front aspect while the MODERN KITCHEN AND DINING SPACE spans the rear of the property with sliding doors leading out to the rear garden. On the first floor there are two double bedrooms, the front room is currently used as an additional reception room and there are two further, large double bedrooms found on the second floor along with a BEAUTIFUL FAMILY BATHROOM with a freestanding bath. The upper floor houses a generous bedroom which measures 28'8 x 14'10 ENJOYING A TRIPLE ASPECT. From the front of the property there are BREATHTAKING VIEWS across the rooftops of Hastings and towards the sea. PRESENTED TO AN EXCEPTIONAL STANDARD throughout this stunning home seamlessly combines a traditional feel with contemporary fittings.



**TOTAL FLOOR AREA : 1796 sq.ft. (166.8 sq.m.) approx.**

Whilst every attempt has been made to ensure the accuracy of the floorplan contained here, measurements of doors, windows, rooms and any other items are approximate and no responsibility is taken for any error, omission or mis-statement. This plan is for illustrative purposes only and should be used as such by any prospective purchaser. The services, systems and appliances shown have not been tested and no guarantee as to their operability or efficiency can be given.

Made with Metropix ©2021

